

A radio-controlled experimental vehicle is being tested on a straight track. It starts from rest and every 10 seconds its velocity is recorded for 1 minute.

t =	0	10	20	30	40	50	60	seconds
v =	0	5	21	40	62	78	83	meters per sec.

A radio-controlled experimental vehicle is being tested on a straight track. It starts from rest and every 10 seconds its velocity is recorded for 1 minute.

t =	0	10	20	30	40	50	60	seconds
v =	0	5	21	40	62	78	83	meters per sec.

Use your calculator to find a model of the form: $v = at^3 + bt^2 + ct + d$.

A radio-controlled experimental vehicle is being tested on a straight track. It starts from rest and every 10 seconds its velocity is recorded for 1 minute.

t = 0 10 20 30 40 50 60 seconds
 v = 0 5 21 40 62 78 83 meters per sec.

Use your calculator to find a model of the form: $v = at^3 + bt^2 + ct + d$.

$$v = -0.00086t^3 + 0.0782t^2 - 0.208t + 0.095$$

Graph the data and the model on the calculator.

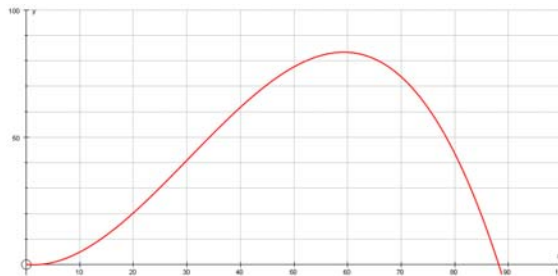
A radio-controlled experimental vehicle is being tested on a straight track. It starts from rest and every 10 seconds its velocity is recorded for 1 minute.

t = 0 10 20 30 40 50 60 seconds
 v = 0 5 21 40 62 78 83 meters per sec.

Use your calculator to find a model of the form: $v = at^3 + bt^2 + ct + d$.

$$v = -0.00086t^3 + 0.0782t^2 - 0.208t + 0.095$$

Graph the data and the model on the calculator.



Use the FTC to approximate the distance traveled during the test.

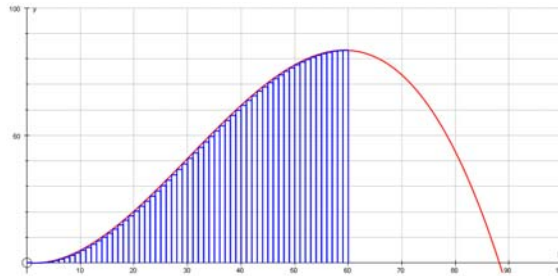
A radio-controlled experimental vehicle is being tested on a straight track. It starts from rest and every 10 seconds its velocity is recorded for 1 minute.

t = 0 10 20 30 40 50 60 seconds
 v = 0 5 21 40 62 78 83 meters per sec.

Use your calculator to find a model of the form: $v = at^3+bt^2+ct+d$.

$$v = -0.00086t^3 + 0.0782t^2 - 0.208t + 0.095$$

Graph the data and the model on the calculator.



Use the FTC to approximate the distance traveled during the test.

A radio-controlled experimental vehicle is being tested on a straight track. It starts from rest and every 10 seconds its velocity is recorded for 1 minute.

t = 0 10 20 30 40 50 60 seconds
 v = 0 5 21 40 62 78 83 meters per sec.

Use your calculator to find a model of the form: $v = at^3+bt^2+ct+d$.

$$v = -0.00086t^3 + 0.0782t^2 - 0.208t + 0.095$$

Graph the data and the model on the calculator.

Use the FTC to approximate the distance traveled during the test.

2475.6 meters